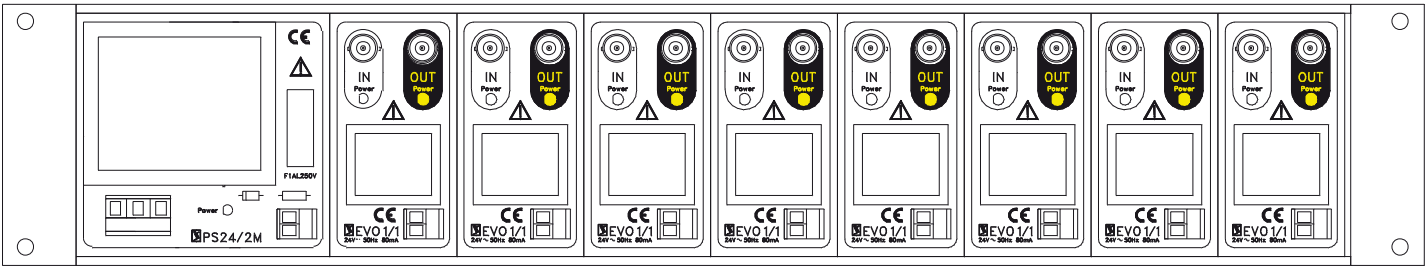
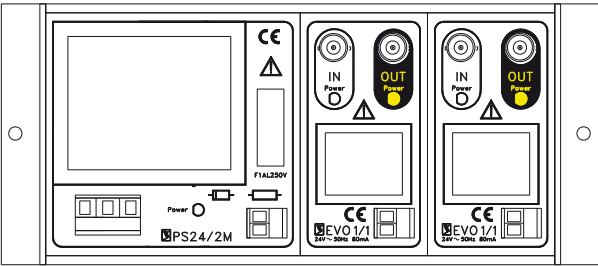
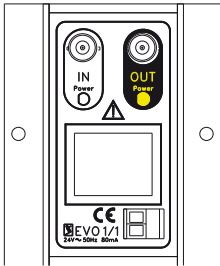


TECHNICAL SHEET

Video IN	EVO1/1
Video OUT	Composite, 1x BNC
Value/impedance	1x BNC
Bandwidth	1VP-P/75Ω
Power supply	17MHZ –3DB
Absorbtion	24VAC
Power ON	80mA
Versions	LED indications for TX (video/IN) and RX (video/OUT)
	EVO1M: Module with 1 video optoisolator
	EVO4M: Module with 4 video optoisolator
	EVO8/PS: Module with 24Vac (PS24/2M) power supply board and 8 video optoisolators
	EVO10M: Module with 10 video optoisolators
Dimensions (W x H x L mm)	EVO1M: 74x50x88 Weight: 200gr
	EVO4M: 230x50x88 Weight: 790gr
	EVO8/PS: 19"-2U Rack Weight: 2,5kg
	EVO10M: 19"-2U Rack Weight: 2,1kg
Accessories	
	Video optoisolator board (1 slot)
	PS24/2M 24Vac-800ma power supply board (2 slots)
	Module with PS24/2M board and two slots to be configured with EVO or EVD boards
RD10M	19"-2U Rack (10 slots)
BP1M	Blind panel (1 slot)

Modular video optoisolator  
EVO Range

INSTRUCTIONS GUIDE



DISPOSAL OF YOUR OLD PRODUCT

Your product is designed and manufactured with high quality materials and component, which can be recycled and reused. When this crossed-out wheeled bin symbol is attached to a product it means the product is covered by the european directive 2002/96/ec. Please inform yourself about the local separate collection system for electrical and electronic products. Please act according to your local rules and do not dispose of your old products with your normal household waste. The correct disposal of your old product will help prevent potential negative consequences for the environment and human health.



BEFORE INSTALLATION AND OPERATION PLEASE READ THESE INSTRUCTIONS CAREFULLY.

Dear customer  
we thank you for choosing our product.  
**Before installation and operation please read these instructions carefully.**

**DANGER AND SAFETY WARNINGS**



This warning symbol means danger. You are in a situation that could cause bodily injury. Before you work on any equipment, be aware of the hazards involved with electrical circuitry and be familiar with standard practices for preventing accidents. **Before operating the machine, switch the power off.**



This warning symbol means that operating instructions and precautions **must be carefully followed in order to avoid bodily injury and equipment damage.**

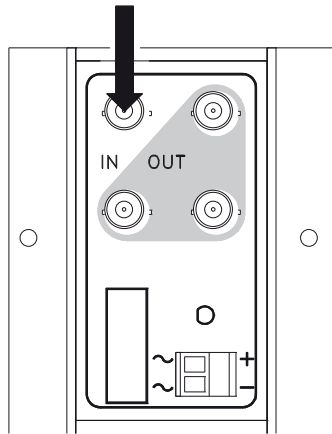
**IMPORTANT PRECAUTIONS AND WARNINGS FOR THE PROTECTION OF GOODS AND PERSONS**

- ⚠ Installation must be carried out by **qualified technical staff in compliance with current standards and regulations.**
- ⚠ **Installation and tools must be in compliance with the property and person security rules:** particular attention must be paid to the product use and working limits.
- ⚠ In order to carry out the product fixing, make the same amount of holes as indicated in the chosen support:  
**use the necessary fixing systems according to the type of wall on which the video distributor must be installed.**
- ⚠ Please do not make any changes to the product without previously contacting the manufacturer which will **formally** provide you with the necessary instructions.
- Please keep these instructions for future reference in case of service or mounting operations.

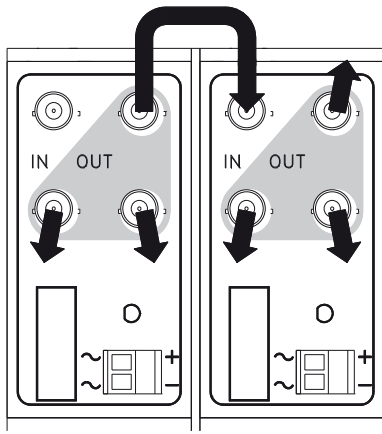
**PRODUCT DESCRIPTION**

Modular video optoisolator for integrated solutions where galvanic isolation between video source (camera, dome, etc.) and equipment is required. **In this way all interferences due to different potentials between different ground points (video hum, ground loops and all those factors that interfere with image quality) are definitely eliminated.** Every module is directly supplied and the presence of separate power supplies for video/IN and video/OUT is indicated through special leds. The product is available in different versions to satisfy all needs (from a single module to 19"rack version).  
**High quality circuitry and electronics guarantee a perfectly linear output together with an extremely large bandwidth:** high performances which make EVO1/1 an extremely valuable product.  
Modularity is available both for **optoisolator** and **video distributor** (EVD system). It is also possible to order a 19"-2U rack version (RD10M) configured with mixed boards. In order to have for example the maximum number of optoisolated outputs it is possible to establish this type of connection:  
connect the video/out to the optoisolator board (EVO1/1) on the video/in of the video distributor board (EVD1/3). In this way the three video/outs of EVD1/3 video distributor are optoisolated against the source (camera, dome ect.).

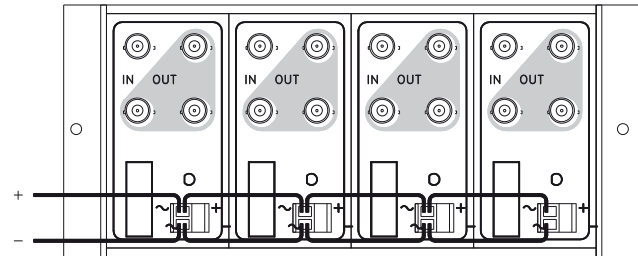
**1.** Insert the video source cable into video IN.



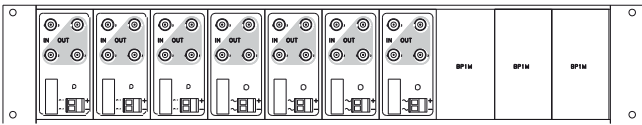
**2.** Insert the connecting cable (monitor, mux, digital, etc.) into video OUT.



**3.** Connect the terminal block to a 24Vac power supply. LEDs will indicate the presence of (separate) power supplies for video IN and video OUT.



**4.** If a 19" rack system is necessary, it is possible to use EVO1/1 board inside the RD10M rack case. Insert the circuit boards in the proper guides carefully and insert as many blank panels BP1M as possible, up to its maximum capacity (10 modules).



**Note 1:**  
A module version supplied with one 24Vac power supply board and 2 free slots to be configured with EVO and/or EVD boards (cod.EV4/PS) is available.



Before switching on the main voltage, make sure that all connections have been carried out.

**Note 2:**  
A 19"-2U rack version, supplied with one 24Vac power supply board and 8 video optoisolator boards (cod.EVO8/PS) is available.

The 19"-2U rack version (RD10M) can be also configured with different boards like for example:  
**n. 1** - 24Vac power supply board (PS24/2M)  
**n. x** - video optoisolator boards (EVO1/1)  
**n. x** - video distributor boards (EVD1/3)